



**Constable
Data Systems INC**
Built to Serve. Engineered to Scale.

**Veteran-Owned | Clean Energy +
HPC Infrastructure | SDVOSB**

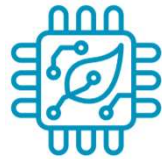


Investor Pitch Deck





Powering Tomorrow's Compute Infrastructure Sustainably



Bridge clean
energy with
sovereign
compute



Enable edge
compute in
underserved
regions



Advance ESG +
national
infrastructure
goals



Seizing A Converging Market Gap



Exploding demand for AI/data workloads



Renewable energy transition mandates



Sovereign & localized data needs





The Infrastructure Bottleneck



Overreliance on carbon-intensive data centers



Grid instability limits compute expansion



Lack of infrastructure in underserved markets



Green, Grid-Independent Compute Infrastructure



15MW Wind + BESS +
5MW Modular HPC



Long-term energy
+ data contracts



Fast deployment, ESG-
aligned, scalable model



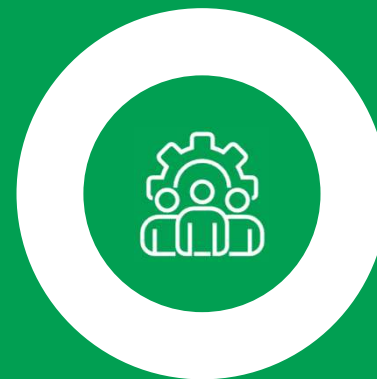
What We Offer



5MW Tier III+ compute
campus (modular/
leased racks)



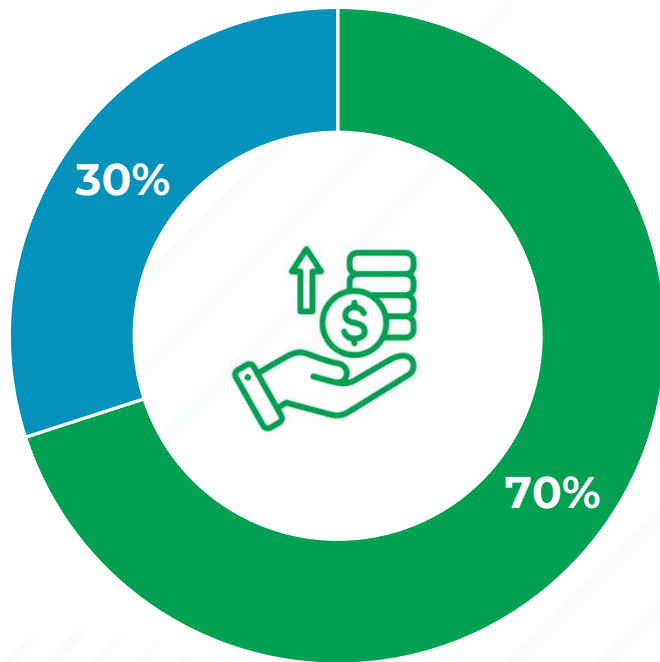
Utility-scale renewable
energy PPA sales



Fully managed hosting
+ sovereign AI-ready
infrastructure



Dual Revenue Engine



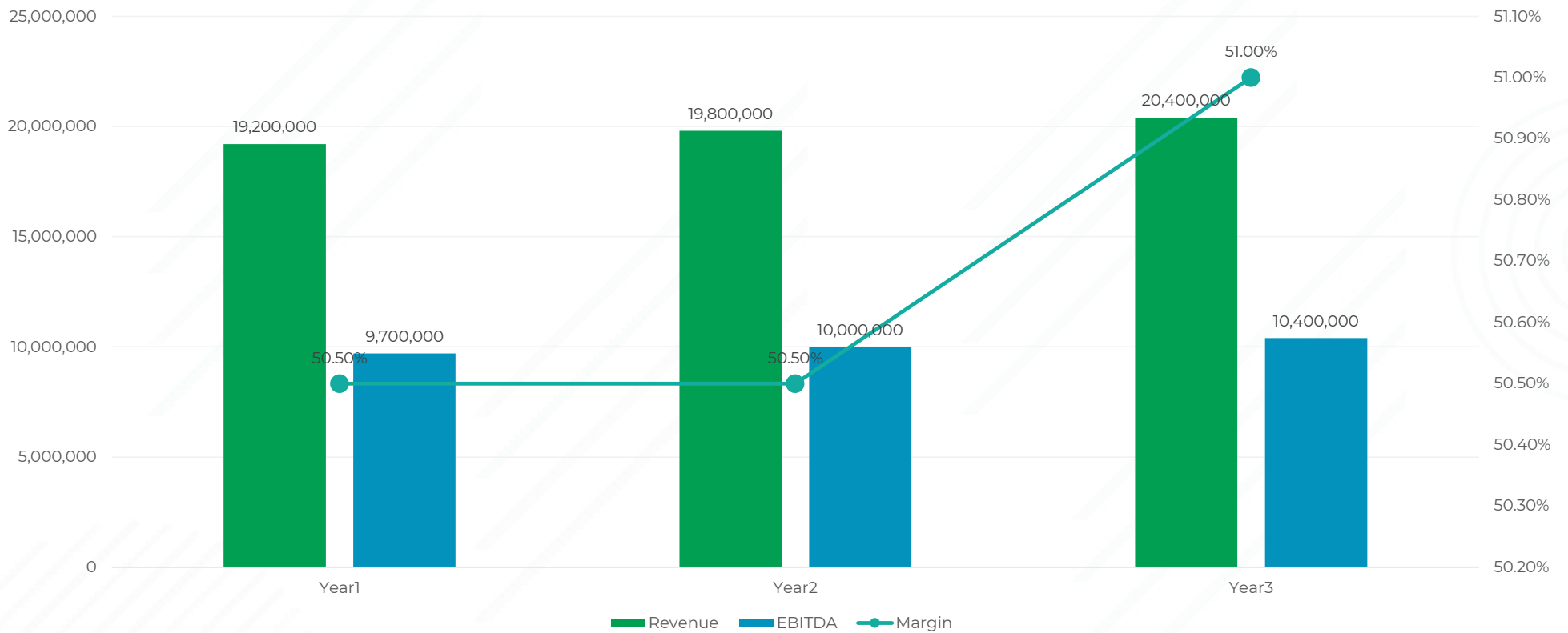
■ Dual Revenue Engine ■ Energy sales (long-term PPAs)





Strong Margin, Fast Payback

Dual Revenue Engine





Strategic Allocation of Reg CF Capital (\$750k)



Category	Amount (USD)	% of Total	Purpose
Land Procurement	\$375,000	50.0%	Secure land purchase for pilot site (Monte Cristi); may include escrow, taxes, notary, and closing costs.
System Down Payments	\$100,000	16.7%	Initial deposits to secure wind turbines, BESS units, and modular data center container slots with vendors (e.g., BYD, Vertiv).
Permitting & Regulatory Approvals	\$50,000	6.7%	Environmental Impact Assessment (EIA), interconnection agreements, energy license, construction permits.
Local Legal & Country Consultant Fees	\$50,000	6.7%	Dominican law firm, government engagement, local site representation, and PPA structuring advisors.
Staff Hiring & Salaries	\$100,000	10.0%	Initial 6–9 months of salary runway for key team: VP, CTO, COO, and country advisor.
Operations & Administration	\$25,000	6.7%	HQ operations, business insurance, compliance filings, accounting, software, and communications.
Legal Structuring & IP Protections	\$25,000	1.7%	Equity agreements, restricted stock, SAFE compliance, IP filings, and cross-border licensing.
Marketing, Investor Reporting, IR	\$25,000	1.7%	Investor updates, media content, outreach, and grant applications (IDB, GCF, etc.).



Capital Formation Strategy

\$325k

Founder-Backed Capital
Injection (Pre-Seed)



\$750,000

Reg CF (SAFE, in progress)



\$1M - \$5M

\$1M SBLC leased → unlocks \$5M
Green IDP Green loan facilities





The Demand Is Real



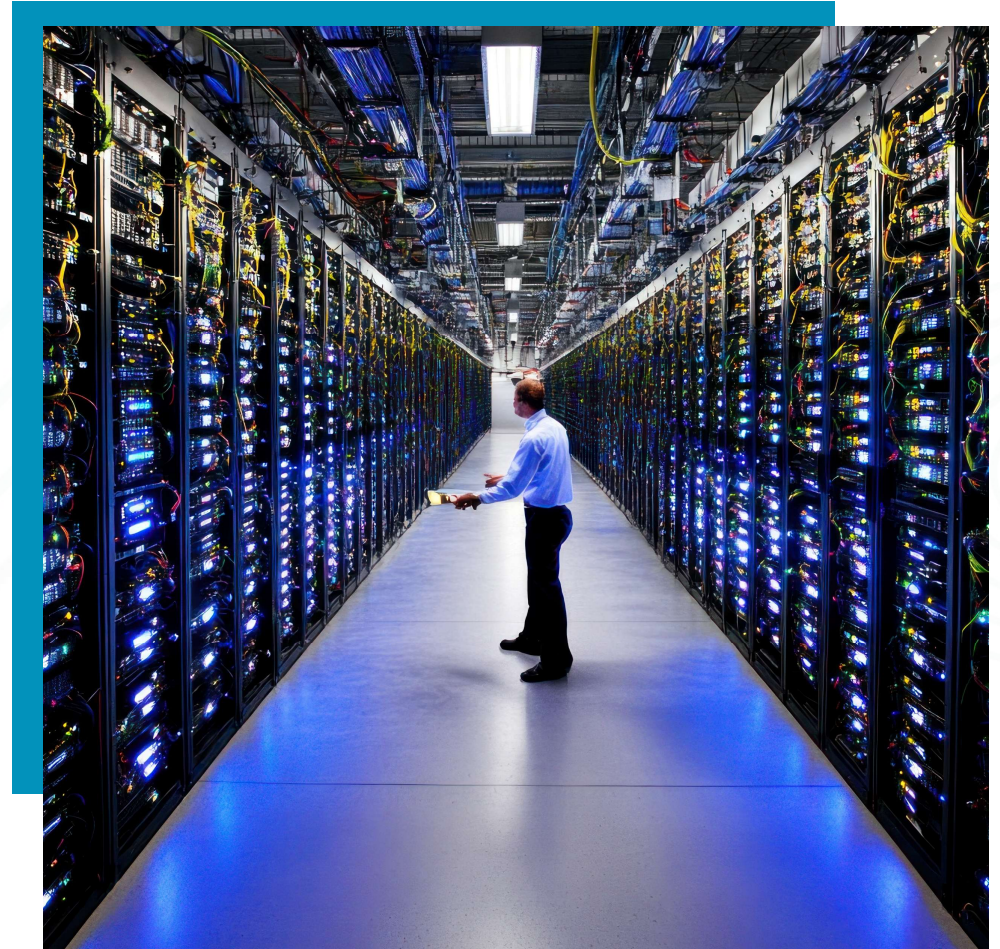
5MW of compute capacity pre-leased
(LOI stage)



Utility PPA under negotiation at
\$0.11/kWh



Vendor engagements with Nordex,
BYD, Vertiv





Built-In Moats

01.



Veteran-led, ESG-
certified (SDVOSB)

02.



Clean energy +
compute in one
asset class

03.



First-mover in greenfield
sovereign compute in
LATAM + USA



Designed For Strategic Exit Or IPO



Year 3+: SPAC or M&A target
(CleanTech, HPC sectors)



High-margin, asset-backed model
ideal for institutional acquisition

Funding



Build



Revenue



Exit





Veteran-Led. Mission-Driven

Craig R. Constable

CEO



A seasoned senior executive with 25+ years leading multimillion-dollar government and infrastructure projects. He brings deep expertise in finance, compliance, and international operations.



Supported by expert team of engineers, energy consultants, and compliance specialists.





Invest In The Future of Clean Compute



Tel: (302) 900-0168 | Fax: (302) 900-0170



constabledatasystems@pm.me



www.constabledatasystems.com



CDS INC. Headquarters:

1201 North Market Street, Suite 111, Wilmington, DE 19801



5MW hybrid wind + BESS + data center pilot location:

CDS Monti Cristi S.A., Monte Cristi, Dominican Republic
(Phase I Launch Site)

